

# Champagne Gardens- Quilt Information

(All dimensions are in inches - Horizontal then Vertical)



- Style:** Horizontal/Straight
- Overall size:** 78 2/3" x 91 1/3"
- Main Blocks:** Rob Peter to Pay Paul and Glorified Nine Patch  
(Finished Sizes) 9" x 9"
- Borders:** 2 Mitered Borders
- Binding:** 9 strips 2 1/4" wide for binding

† After the body of your quilt top is finished, please measure horizontally and vertically through the center of your quilt. If the center of your quilt does not measure 63 2/3 x 76 1/3, you will need to adjust the lengths of your borders to fit. Trim the selvages from all border strips. Sew all strips together end to end to make a long strip.



## Border 1:

Border Style: Mitered  
Finished Widths: Left: 2" Top: 2" Right: 2" Bottom: 2"  
Cut (8) 2" strips of P584-126D



## Border 2:

Border Style: Mitered  
Finished Widths: Left: 6 1/2" Top: 6 1/2" Right: 6 1/2" Bottom: 6 1/2"  
Cut (9) 6 1/2" strips of E929-142D

# Fabric Yardage



**E924-114D**  
4 YARDS

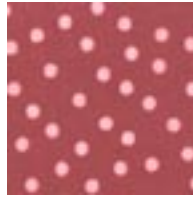
*Binding: 5/8 YARD  
(cut 9 strips 2 1/4" wide for binding)*



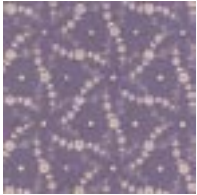
**P593-142D**  
1 1/8 YARDS



**E924-114D**  
2 1/4 YARDS



**P598-126D**  
1 YARD



**P576-135D**  
1 3/4 YARDS

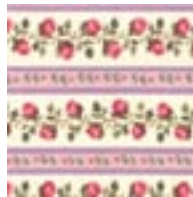
*Backing: 5 1/2 YARDS*



**P602-126D**  
1 YARD



**P585-142D**  
3/8 YARD



**P602-135D**  
1 1/4 YARDS



**P584-126D**  
1/2 YARD